



LEAF NEWSLETTER

Apollo Beach Garden Club, Inc. 2017

November 2022 - Edition #35

"Just Keep on Planting"



President's Message from Paula's Desk

Here we are in November the heart of the Florida growing season. It is now a month since Hurricane Ian came through and did some damage for some of us, the community forest garden had a lot of wind damage to our fruit trees, major inconvenience for others and devastated our neighbors in the south. Our Community Forest Garden & Third Insight Design have sent some replacement plants & fruit trees to Cultivate Abundance Garden which serves the area's migrant workers in the Immokalee area. This is what community is about --- helping others to get through troubling times.

The Garden Club had a great speaker last month in Rob Northrop, the urban tree forester at the UF/IFAS Extension. He was knowledgeable and had a lively presentation. Thank you, Jeanette, for the arrangements. Rob was very impressed with the community forest garden tour from Annie & Jeanette. He told us he expects to see just a flower garden!

This month's speaker is Kenny Coogan the area's expert on carnivorous plants. He is giving us copies of his new book, just published on the subject in June, *to raffle*. He is bringing some of his plants, and of course the book, for members & guests to purchase. So, bring some dollars. I have 3 of his plants that are so very happy! *I encourage you to bring a guest so we can pack the room!*

December is our annual Holiday Party. Would love to hear how we can best celebrate this season with you. We did a restaurant last year, have done a home in previous years – your thoughts?

If you hear rumored that the community forest garden may expand, know we are beginning that discussion with the Parks & Recreation Dept. We could use a bit more elbow room, a reason to write a grant request and a new exciting challenge. Stay posted.

The Garden is getting its face-lift for fall with Raleigh putting in new long lag screws into the corners of every plot. Thank you. Soil amendments and some soil to add to your plot are on order to refresh the beds. We are adding azomite (provides trace minerals & elements) and mycorrhizae (a beneficial fungi) that helps build your soil & provide to the nutrition & productivity of your plants. Even if you have already planted your plot, it can be added & worked into the soil around your plants. We will let you know when it and directions are in the shed for you to use!

Come work with us in the garden Tuesday or Saturday mornings. See what the Tiny Tots have done with park staff Angela & member Jill with their new strawberry patch. Just sit in the shade and relax.

"Anyone who has time for drama is not gardening enough!" **Best always, Paula**

Paula Olesen, President 813 512-1329



**ABGC Garden
Coordinator
Tammy Kennedy**

THANK YOU!!!!



So many members, volunteers and neighbors have come together to restore things from Ian's storm damage.

As we move into fall it is imperative for each bed to rotate your crops and amend your soil to improve nutrients allowing for healthy harvesting of your crops. If there were nitrogen fixers planted in your bed over the summer, part of the amending process is tilling the roots/ plants into the soil. We will have items in the shed with instructions of how much and how to use them to help you amend the soil very soon.

It is important to rotate your plants, but that doesn't mean the plant only, but the plant family. For example: the common tomato, *Lycopersicon esculentum* Mill., belongs to an extremely diverse and large family Solanaceae. Often referred to as the Nightshade family, this family contains many of our commonly cultivated plants (potato, peppers, eggplant, tobacco, petunias, tomatillo) and various weeds (nightshades, jimson weed). If the tomatoes were on the east end of your bed last year you should make sure they are on the west end of the bed this year. If you are unsure of what was planted, please ask, we will do our best to help figure it out with you.

Nematodes are going to be a part of some beds with the age of our garden. Watering should be 10-15 minutes several times a week. Too much water will increase the attraction to nematodes and other bugs. Our watering days for this zip code are Sunday and Monday.



With restoration of the garden, we have also taken the time to rearrange the shed. There is a white binder with the new bylaws, membership list, volunteer sign in/out, questions, membership lists, etc. Hopefully any information you need will be available in the binder. There is a plot map with members names, schematics of irrigation, manuals, etc.

A printed list of tasks will be on the rack and or the magnetic calendar/ list for anyone not sure what tasks are needed for garden upkeep. My goal is to have a calendar of tasks needed each month now that we have had some time to see what seems to be a normal pattern of growth and care.

There are pink flags in beds that aren't rented. If someone comes in and wants to join when you are in the garden, there are membership forms for renting a bed or garden membership without a bed. All forms are in the binder under the membership tab. Please contact a board member (list with information in the binder) for help and to inform us of the new member for follow up communication.

****As we move into the new year**, I am trying to increase communication. Please let me know your choice of communication: texts or emails. In the past we have tried putting things on Facebook, but some have expressed not seeing the posts. We try to let everyone know what is available to share in the garden when it is harvested.

Our desire is to be helpful to everyone. We are in the garden on Tuesday and Saturday mornings. If you can't be there on those days we understand, but it is important that you communicate with us as well so we can be a "Community" working together.

One final note. We were able to share some of our plants that didn't sell with a community garden south of here in Immokalee that was hit hard from the storm. They are a migrant community and have a significant number of families suffering food insecurities.

The organization: **Cultivate Abundance**
www.cultivateabundance.org

They help to educate and provide resources for families to be able to feed themselves. My church (Bayshore Baptist in South Tampa) went down Oct. 22 to help rebuild fencing, patch roofs, etc. I was able to get some of the plants that they needed from our plant sale leftovers and donations from Third Insight Design. It was a true blessing to call and offer papaya, mango, and other fruit and vegetable seedlings and plants for them to have starters to replenish their lost crops. One of the directors told me he was on his way out the day I called to see if he could find any papaya. We sent 5 or 6 for them.

Thank you all for being a part of this Community and an arm to others in need.

HAPPY FALL Y'ALL!
Tammy Kennedy



*Sam Goodwin
- the Beekeeper*

Garden Beehive Improvements.

Many of you may have noticed changes to the garden beehive. I

moved the bees into a wider, but shorter hive on a wooden stand. In the past I've had to move the hive and reset the blocks when we add mulch to keep the bottom of the beehive off the ground. This new height will provide an additional benefit of exposing the hive to more sunlight.

A couple of days later I added a jar feeder with syrup and vitamins. The worker bee population is high, and the queen is



activity laying eggs. You'll still see drones, but after several cool days the ladies will kill or chase them away. They have plenty of honey and

pollen to survive the winter. They'll need a mite treatment and monitoring until spring.



Update on the Swarm Caught in the Oak Tree Behind Our Garden.
Have you ever



wondered what happens to swarms caught or hives removed?

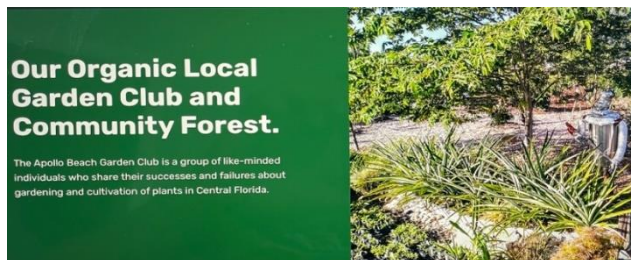
This exposed hive was caught in February of this year with the help of Christine and Dana. It's currently six to seven times larger and is producing enough excess honey to share with weaker captures. This spring I'll be adding honey supers for human consumption. A serious cold snap would have killed this exposed tree hive as honeybees are cavity nesters.

Hive or Apiary Visits for the Brave.

Any Garden Club Members that would like to see inside our Garden Hive (measly 20 thousand bees) or the Ruskin Apiary (impressive million bees or so) let me know. I would be happy to either visit the apiary from inside my truck or put on bee suits and go through a couple of hives with you.

Bee a Bee-Keeper, not a Bee-Haver

You may have noticed I've started editing our web page. If you have items of interest related to our organization (pictures or written word), please send them my way for inclusion. Our web page has a history of every increasing improvement and I hope to continue the progress.



<https://apollobeachgardenclub.com>



**Joanne Armstrong,
Secretary**

APOLLO BEACH GARDEN CLUB INC.

Membership Meeting: October 18, 2022

ATTENDANCE: Paula Olesen, Ev and Janie Barnes, Tammy Kennedy, Joanne Armstrong, Raleigh Barnes, Chris Deno, Jeanette Doyle, Annie Jimenez and Guests.

Secretary's Report: Minutes of the September 20, 2022 meeting were printed in the last newsletter. Motion to accept the Secretary's report was made by Ev Barnes and Second by Christine Deno. All approved.

Treasurer's Report: The current balance of the treasury is \$2,983.81. We received a few more payments for bed leases tonight which will be added to the account. We discussed our scholarship money for the two local high schools. We will also review & approve our next year budget at the November meeting. Motion to accept the Treasurer's report was made by Tammy Kennedy and Second by Raleigh Barnes. All approved.

Proposed Business Card: In previous meetings we have looked into developing a business card to distribute when the opportunity presented. We have decided on the plain stock with a two-sided card with the sizing of the letters to be larger. Remove flowers from back of card. A motion to approve the card with changes to purchase 500 cards for \$44.00. Motion to accept was made by Christine Deno, Second by Tammy Kennedy. All approved.

Community Forest Garden: Tammy Kennedy reported we will amend the available beds that are not leased to keep the garden-fresh looking. As we have guests in the audience it was mentioned that there is education offered by Third Insight and Design and as a bed member or non-bed member, we would love to have them come to the garden on volunteer days. In addition, all the beds do need to have added soil with nutrients for the next growing season. Along with noting the corner boards of all the rental boxes will have additional lag bolts added for preservation of the beds. We have a donated Martin house and we need insight as to where to locate the bird house. We will be supporting a Mission program called Cultivate Abundance down in South Florida that supports & feeds the local migrant workers. We have some available plants that did not sell during our plant sale and donations from our members to also share and assist in repairing the damage of Hurricane Ian. We will work on the signage in the garden since it has deteriorated recently. We will replace our signs by parking lot with newer tags on the trees/plants. Question was given to the guests as to how they received the information to attend our meeting today. Response was made as was noted they saw an article in newspapers and on Facebook. We also need to add the information on the marquee out front of the building. Guests recommended a sign with arrows showing direction to the room and door location where the meeting is held that evening. The Garden is open Tuesday and Saturday mornings for anyone to walk through, ask questions and enjoy the

ambiance. Janette Doyle states a tent was donated last week and she would like to have a card signed by the members to show appreciation for this donation. We all agreed to sign the card when it was available.

Membership: Raleigh Barnes as the membership chairperson has developed a new form for everyone to fill out at the membership table. May is the month dues are to be renewed for Apollo Beach Garden Club membership with payment at that time. May is also the time Florida Federation of Garden Clubs needs our membership dues and participation information.

Programs: Christine Deno states she has two possible programs for next year. Melanie Higgins has a BlueBird Trail in Sun City Center and is available to speak to our membership. We would also like to do a field trip to her Trail in the near future. Dr. Matt Smith, Professor, University of Florida, Gainesville may be a future speaker. We again plan to make a trip to Palma Sola Botanical Park in Bradenton. Jeanette Doyle asks for news, articles and photos before the end of the month for the upcoming newsletter. Coalition of Garden Clubs may have their April 2023 meeting at our garden with drinks and snacks available for attendees. We would be honored to have our garden open to the Coalition. Adjournment was 8:40pm

Submitted by Joanne Armstrong, Secretary



Tiny Tots- at the Community Garden
with *Jill & Angel-* Leaders
Hillsborough County Parks & Recreation - Apollo Beach Park



Good Morning Tots and Parents!
Today is the day we are going to
plant our strawberry patch. I hope to
see you at 10:)



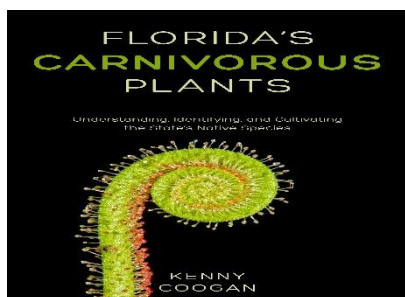
ABGC Membership Meeting Program Schedule:



3rd Tuesday of the month @ 7-8:30PM (Open Board Mtg 6-7PM)

Community Room, near bathrooms
664 Golf and Sea Blvd, Apollo Beach, FL 33572

2022-2023



Join the Apollo Beach Garden Club for the area's expert on carnivorous plants: Kenny Coogan

November 15th at 7 PM Activity Bldg.

at the Recreation Center, 664 Golf & Sea Blvd.

Book raffle; Book & carnivorous plants for purchase.

All are welcome to attend!

apollobeachgardenclub@gmail.com for more info

TBA - Dec. Holiday Get Together

January 17th - Fraud - Deputy Jeffery E. Merry Jr.,

HCSO Community Resource Deputy – SCC

February 21 – Native flowering plants that attract pollinators.

Master Gardener Vicki Kruse

(Vista Gardens, Hillsborough County's First Organic Garden Park.)

March 21 - Tool Sharpening - Raleigh Barnes

April 18 - , May 16 - , June 20 –



Club Dues for 2022-2023 are due:

We welcome you all back and hope to add a few new members. Plans are in the making for a fun filled year of gardening, learning, making new friends and enjoying a few field trips along the way. Please let us know your suggestions for activities of your interests.

Club Dues \$15 and FFGC \$12.

We recommend you join both organizations. The FFGC has quarterly magazine you will receive and our ABGC benefits by you joining.

The total for both is \$27. Check made out to the **Apollo Beach Garden Club** & mailed to

PO Box 3294, Apollo Beach, FL 33572. Or, you may pay at our next membership meeting.

The Community Forest Garden raised beds are available to any South Shore resident to lease for the year. You are required to come spend 1-2 hours in the garden with our co-coordinators to learn the expectation of being a lease, before your lease form is accepted.

Payment: You may deliver in person or mailed to Apollo Beach Garden Club, PO Box 3294, **Lease fee** is \$75.00. But if you are a paid member of the Apollo Beach Garden Club for 2021-2022, the lease fee is only \$37.50.

Questions - please contact Paula

813 512-1389 apollobeachgardenclub@gmail.com

Garden Events:

- Nov.3rd "A Garden Tour" by Jill & Paula
The Mirabay Woman's Group, Leader Nancy
- Possible field trips: Palma Sola Botanical Garden – Bradenton
Selby Botanical Gardens' Orchid Show



Community Calendar

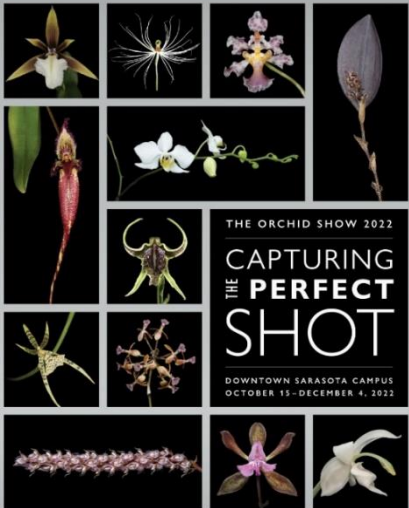
Free Event!
Herb Gardening Seminar
Saturday, Nov. 5 @ 10 am





THE
SANCTUARY

VOLUME 2, ISSUE 4 SEPTEMBER-DECEMBER 2022



THE ORCHID SHOW 2022
**CAPTURING
THE PERFECT
SHOT**
DOWNTOWN SARASOTA CAMPUS
OCTOBER 15-DECEMBER 4, 2022

MARIE SELBY
BOTANICAL
GARDENS



**6th Annual
Great Plant Auction**

Sunday, Nov. 13, 2022 / Hillsborough County Fair



Auction starts promptly at 1pm

**Hillsborough County
Fairgrounds**

**215 Sydney-Washer Road
Dover, FL 33527**

**Preview plants Nov. 11-13
(during fair hours
in the HSWCD tent)**

Don't miss the opportunity to purchase high-quality plant materials at reasonable prices, grown and donated by local nurseries. Proceeds benefit HSWCD youth programs, the Hillsborough 100 Conservation Challenge and agricultural college scholarships.

Auction presented in cooperation with **LOCAL NURSERYMAN** donating the best of the best in . . .

ANNUALS 🌿 PERENNIALS 🌿 LANDSCAPE & BUTTERFLY PLANTS
FERNS 🌿 BUSHES 🌿 TREE & PLANT NUTRITION ITEMS

Auction Chairman, Roy Davis

Direct Inquiries To:
Betty Jo Tompkins
813-477-8332
bjt6890@yahoo.com





Christmas
Recycle Sale

Garden Club of St. Petersburg

November 19th, 2022
9am-3pm

Join us for this one day sale with holiday
items, plants, and more!

500 Sunset Drive S.
St. Petersburg, FL 33707
gardenclubstpetersburg.org



Lic./Franchise Proceeds support operating funds and programs.
The Garden Club of St. Petersburg, Inc. is a non-profit tax exempt organization.
Registration is required. A copy of the official registration and financial information
may be obtained from the State of Fla. Division of Consumer Services. Registration
does not imply endorsement, approval or recommendation of the state.

Projects



Floral Thanksgiving Arrangement



Grapevine Orb



Hanging Orchid Planter



Build Your Own Pumpkin Bird Feeder

Thanksgiving Garland



Paper Whites

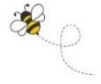
We Are Grateful For

.....



October's Favorite Garden Photos

The Apollo Beach Community Forest Garden - *Fall* & *Winter* Planting



Our speaker at our membership meeting, Tuesday, October 18th, was **Hillsborough County's Urban Forester - Rob Northrup** presenting a program on urban trees and birds and discussing the importance of community gardens. They are an important tool to educate, bringing the urban centers into the circle of growing our own food and learning about nature.

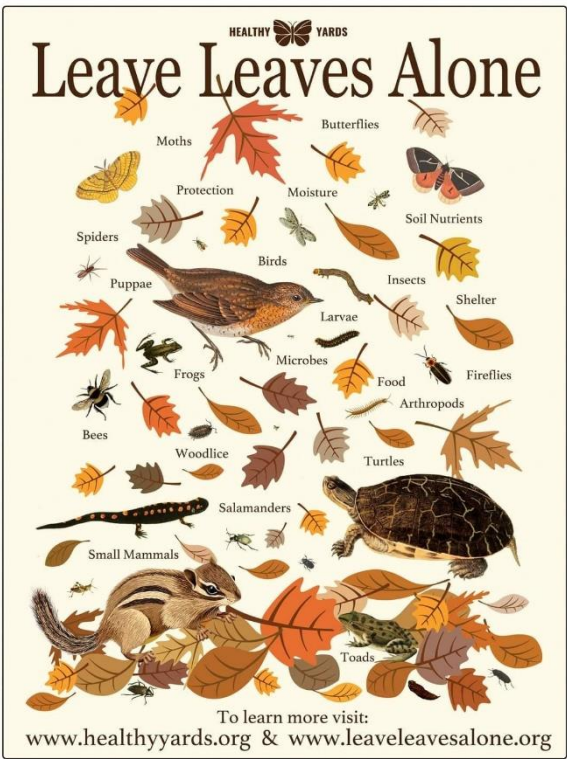
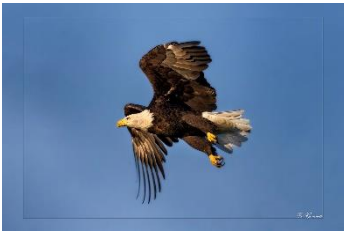


Before the meeting, Annie graciously provided a garden tour for our guest.





Riverview Garden Club visit



Gardens are flourishing, stop by and visit!

Volunteer to help!!

Garden Visitor Hours -

Open to the Public

Tuesday and Saturday from 9 to 12

Tours from 10 to 11 AM

Garden is closed on Holidays

To schedule a tour outside regular hours email
apollobeachgardenclub@gmail.com or call 813-361-3037



Object and Mission of the Apollo Beach Garden Club, Inc.:

The Object of the corporation is to enrich outdoor garden experiences through **education** programs, public awareness, experts and a community garden.

The Mission is for residents of Apollo Beach and the South Shore community to learn how to grow various endemic, epiphytic, edible and Florida-friendly plants.

In addition to understanding the significance of local environmental issues and **regenerative** efforts.



2022-2023 Elected Board:

President: Paula Olesen – apollobeachgardenclub@gmail.com

or 813 512-1389

Secretary: Joanne Armstrong joanne71oceanblvd@hotmail.com

Treasurer: Ev Barnes ejanr@aol.com

Co-Coordinator, Community Forest Garden:

Tammy Kennedy tammy.kennedy2@gmail.com

Directors:

Website & Bee Keeper: Sam Goodwin Bees4Sam@gmail.com

Facebook Administrator & Programs: Christine Deno cdeno58@gmail.com

Newsletter Editor & Programs: Jeanette Doyle apollobeach5@gmail.com

Membership - Raleigh Barnes raleigh.barnes@gmail.com

